


Neighborhood Context, Food Policy and Energy Balance

Lori Kowaleski-Jones
lk2700@fcs.utah.edu

Department of Family and Consumer Studies
801-585-0074

 The image part with relationship ID rid3 was not found in the file.



Built Environment & Energy Balance

- Are walkable neighborhoods associated with lower levels of individual PA & BMI?
- What are the implications of non-random selection into neighborhoods.
- DATA: UPDB, NHANES
- Funded by NIH/NIDDK & NIH/NCI

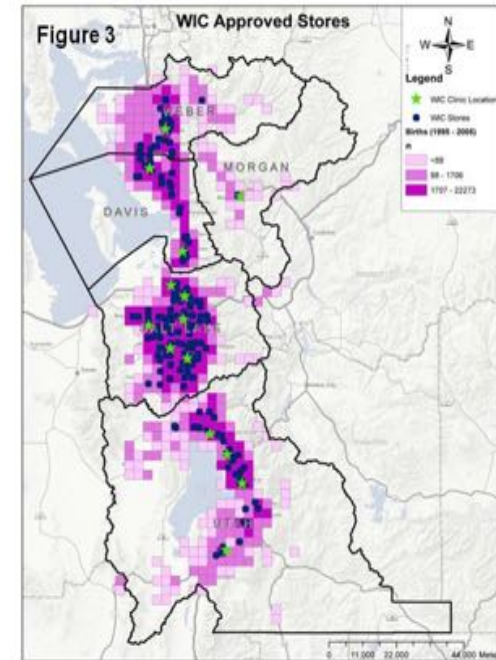
Food, Public Policy & Individual Outcomes

- What are the effects of assistance programs such as WIC and NSLP on maternal and child outcomes?
- What is the role of food insecurity on child and adult BMI?
- DATA: NHANES, ECLS-K, NLSY79, PSID-CDS
- Funded by USDA

Key Elements of Research Agenda

WIC Participation and Maternal Health

- What are the effects of WIC participation on recommended GWG? Is the impact of WIC conditioned by family background and WIC policy environment?



Future Directions